



# PanelSafe®

Integrated Protection  
for Data Storage  
Cabinets

# PanelSafe

## Integrated Protection for Data Storage Cabinets



Example of Master/Slave mounting

Data processing, telecommunications, ISPs and production plants are today increasingly dependent on the permanent availability of their electronic equipment. Failure of such equipment leads to severe disruption and consequent loss of revenue. Effective fire protection is crucial because it is often not only the fire but the fumes that damage the components.

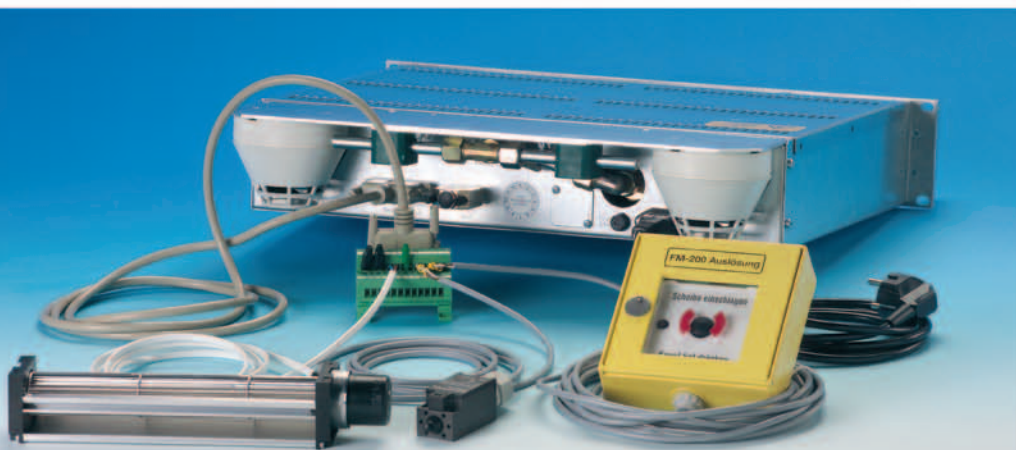
The **PanelSafe** system offers localised protection for high-value electronic equipment. Fires are suppressed in the first critical phases of their development, before they have a chance to do any serious damage.

**PanelSafe** is an automatic fire detection and suppression system fully customised in a 19" modular rack. It is a highly cost-effective fire protection solution for EDP servers, telecommunication systems and switch cabinets. It consists of a master unit (fully functional fire detection, control and suppression unit) with an optional slave unit (detection and suppression).

The **PanelSafe** cabinet suppression system saves space through its ease of integration into standard enclosed 19" modular rack cabinets with volumes of up to 1.2 m<sup>3</sup>. Larger cabinets and interconnected adjoining cabinet units (max. 5) can be protected with additional slave units (containing detection and suppression components only). **PanelSafe** is available as in-cabinet and on-cabinet versions.



On-cabinet version:  
Suppression nozzle and  
smoke detectors are  
integrated inside the  
cabinet



**Accessories:**  
terminal block,  
extinguishing fan and  
door contact switch;  
optional: manual  
release

Flexible by modular design

## PanelSafe Features

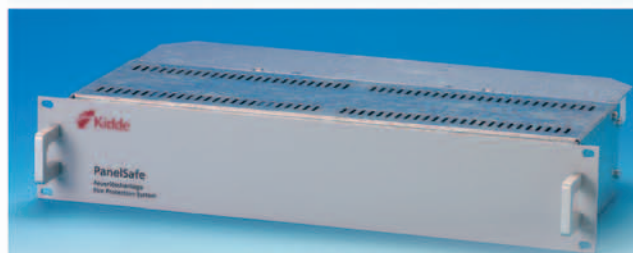
- **Space saving**
  - 19"-unit with 2 height units only
- **Rapid detection**
  - Smoke detectors located within the 19" cabinet
- **Minimising damage**
  - via automatic shutdown contact
- **Rapid extinguishment**
  - due to the direct discharge of the FM-200 or Novec™ 1230 suppressant from 3M™ within the cabinet
- **Simple installation and commissioning**
  - with pre-assembled components
- **Easy maintenance**
  - due to modular concept
- **Quick and safe recognition of events**
  - reported via detailed multifunctional LED-display
- **Safe protection of large cabinets**
  - Even cabinets up to 6 m<sup>3</sup> can be protected by using slave units

## PanelSafe Applications

- EDP and telecommunication cabinets
- CNC control cabinets
- Low voltage cabinets
- Telephone systems
- Medical facilities



**In-cabinet master unit**  
For mounting in a standard 19" modular rack cabinet



**In-cabinet slave unit**  
For extending the protected volume



**On-cabinet master unit**  
for mounting on 19" cabinets with corresponding volume



**On-cabinet slave unit**  
for extending the protected volume



**Accessories for the on-cabinet version:**  
Extension cable for smoke detectors, bulkhead screw fitting and nozzle extension hose

## Technical data: Master unit

Input supply	230 VAC $\pm$ 15 %
Output Voltage	24 VDC, 1A, for external control purposes, sounder and extinguishing fan
Battery	2 Ah (sufficient for 4 hours)
Smoke detectors	2 optical scattered light detectors used in two-detector coincidence detection
Supervised in- and outputs	for mains supply, smoke detectors 1 & 2, manual release, door contact switch, extinguishing fan, alarm horn, external control
Voltage-free relay outputs	for pre-alarm, main alarm, common fault and shutdown contact (contact load 30 VA)
Suppressant disabling function	via door contact switch
Suppressant	FM-200, C <sub>3</sub> F <sub>7</sub> H/N <sub>2</sub> (25 bar) or Novec™ 1230, C <sub>6</sub> F <sub>12</sub> O/N <sub>2</sub> (25 bar) from 3M™
Suppressant cylinder	FM-200: 1 litre Novec™ 1230 from 3M™: 1.1 litre
Operating temperature range	0 °C up to 40 °C
Weight	Approximately 14 kg
Indications	Mains supply, CPU, common fault, smoke detectors 1 & 2, manual release, extinguishant container (pressure switch), extinguishing fan, sounder, external control, discharge actuator, pre-alarm, main alarm, discharge (suppressant released)
Service buttons resp. key switch	Unit on/off, extinguishment on/off, reset
<b>Dimensions</b>	
Width	19"
Height	2 HU (approx. 87 mm)
Mounting depth	403.25 mm

## Technical data: Slave unit

Smoke detectors	2 optical scattered light detectors used in two-detector coincidence detection
Suppressant	FM-200, C <sub>3</sub> F <sub>7</sub> H/N <sub>2</sub> (25 bar) or Novec™ 1230, C <sub>6</sub> F <sub>12</sub> O/N <sub>2</sub> (25 bar) from 3M™
Suppressant cylinder	FM-200: 1 litre Novec™ 1230 from 3M™: 1.1 litre
Operating temperature range	0 °C up to 40 °C
Weight	Approximately 8 kg
Indications	via master unit
<b>Dimensions</b>	
Width	19"
Height	2 HU
Mounting depth	265 mm

Novec and 3M are registered trademarks of the company 3M.  
Installation and commissioning must be in accordance with the Kidde Brand- und Explosionsschutz GmbH installation, operation and commissioning manual.



Kidde Brand- und Explosionsschutz GmbH  
Harkortstr. 3 • 40880 Ratingen  
Telephone +49 (0)2102 57 90-0 • Fax +49 (0)2102 57 90-109  
info@kidde.de • www.kidde.de

Kidde Brand- und Explosionsschutz GmbH  
Sales office South  
Steinerne Furt 78 • 86167 Augsburg  
Telephone +49 (0)821 74 82 95-0 • Fax +49 (0)821 74 82 95-10

PanelSafe is a registered trademark of the company  
Kidde Brand- und Explosionsschutz GmbH, Ratingen

Subject to changes!  
The information in this brochure are only general descriptions and/or performance data which, as described herein, are not always applicable to the specific case of application and/or which can be changed due to further development of the products. The performance data desired will only then have binding character if they are agreed expressly at contract conclusion.

Issue: November 2006